



MGC MOULD TREATMENTS

WATER BASED SYSTEMS

- **EFFECTIVE AGAINST ALL TYPES OF MOULD**
- **APPROVED UNDER C.O.P.R. 1986 (AS AMENDED) BY H.S.E.**
- **PROVEN TREATMENTS - USED FOR OVER 50 YEARS**
- **LONG LASTING IN EXTREME CONDENSATION CONDITIONS**



BLACK MOULD

THE PROBLEM

Every dwelling, irrespective of its construction, contains within its fabric mould spores which are dormant and completely harmless. However, given the right conditions these spores will germinate resulting in extensive growths of black disfiguring mould.

Mould needs very little nutrient and will grow on walls and ceilings irrespective of the decorative finish. Mould spores will also spread into the air which is a serious HEALTH RISK, and give off an obnoxious musty smell. Clothes, furnishings and carpets can also be destroyed by unsightly mould.

THE CAUSE

Mould in the home arises from dampness, predominantly caused by CONDENSATION. However, a small proportion of problems occur due to true dampness – rising damp, penetrating damp, bursts and leaks. The incidence of condensation in domestic dwellings has increased dramatically over the past five decades and is attributable to various factors – lack of heating – inadequate ventilation – use of LPG heaters. The modernisation of properties, making homes virtually airtight and draught free, with new pvcu windows, increased insulation and the removal of open fires, are additional contributory factors.

THE HEALTH RISK

Mould in houses, even a small contamination, is a serious health risk which can result in asthma and other respiratory diseases. Mould also attacks foodstuffs resulting in dangerous toxins which in turn can give rise to food poisoning, Environmental Health Professional Practice – Mould Fungal Spores 1985 refers. The British Medical Journal report, Damp Housing, Mould Growth and Symptomatic Health State 24/6/89, confirms that active spores, even in small concentrations, are detrimental to the health of adults and children. Under the Housing Health and Safety Rating System (HHSRS) mould is a Category 1 hazard.

THE SOLUTION

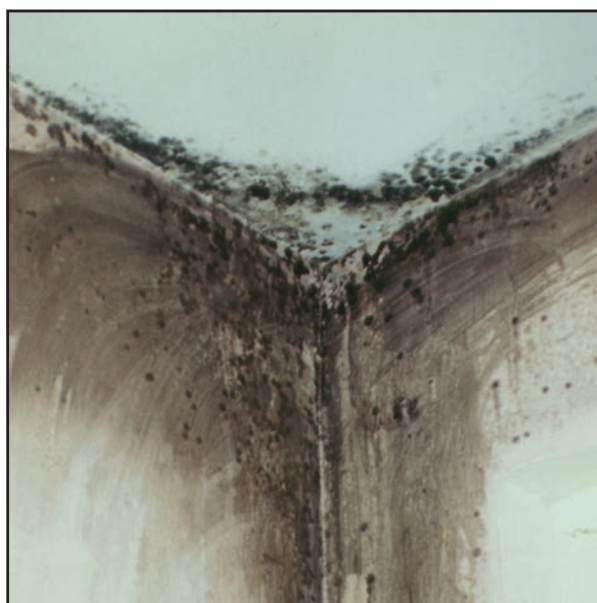
MGC is a unique organisation specialising exclusively in the study of mould problems, their control and eradication. MGC has, from experience gained over many years in this Country and Overseas and through a programme of research, developed products and systems specifically to combat this ever-increasing menace in today's environment.

MGC treatments have been used successfully for over fifty years in Local Authority, Housing Association and private landlord flats and houses, hotels, hospitals, prisons, schools, universities, commercial premises and industrial buildings.

ALL MGC MOULD TREATMENTS, FUNGICIDAL PAINT/PASTE ADDITIVES AND FUNGICIDAL PAINTS AND COATINGS ARE APPROVED UNDER C.O.P.R. 1986 (AS AMENDED) BY THE HEALTH AND SAFETY EXECUTIVE. MGC PRODUCTS PROVIDE A PROVEN AND EFFECTIVE LONG TERM SOLUTION FOR THE ERADICATION AND PREVENTION OF MOULD PROBLEMS, EVEN IN THE MOST SEVERE CONDENSATION SITUATIONS.



MGC PROFESSIONAL SYSTEM



RLT PACK / BIOCHECK



MOULD ERADICATION KIT BIOCHECK B.B. PACK



MGC MOULD ERADICATION

MGC PROFESSIONAL SYSTEM for severe mould.

This treatment comprises BACTDET D 05 for cleaning and sterilising the surface and HALOPHANE BONDING SOLUTION to penetrate the substrate, kill the roots of the mould and form a fungicidal barrier.

Decoration: BIOCHECK EMULSION/GLOSS: containing biocides to prevent surface mould growth.

MGC FUNGICIDAL ADDITIVES – additive for emulsion, wallpaper paste and size.

RLT PACK for moderate mould.

A complete system to treat 45-50m². Comprising RLT BACTDET 05 for cleaning and sterilising the surface and RLT HALOPHEN to penetrate the substrate, kill the roots of the mould and form a fungicidal barrier.

Decoration: BIOCHECK PRODUCT RANGE/MGC FUNGICIDAL ADDITIVES.

MOULD ERADICATION KIT for minor problems of mould.

The MOULD ERADICATION KIT is a compact treatment designed specifically for use by tenants. It contains RLT BACTDET 05, RLT HALOPHEN, MGC FUNGICIDAL ADDITIVES, mixing bucket, sponge, gloves, brush, everything needed to treat a mould problem, sufficient for 10-12m².

BIOCHECK B.B. PACK The BIOCHECK B.B. PACK contains RLT BACTDET 05 and 2.5 litres of BIOCHECK Emulsion Matt or Silk sufficient for 15m², ideal for use in kitchens and bathrooms. The materials in both Kits are approved under C.O.P.R. 1986 (as amended) by the HSE for both Amateur and Professional use.

RLT CLEARMOULD SPRAY mildew treatment.

For the treatment of mould infections on soft furnishings, carpets, leather goods, etc. and small areas of mould on walls, ceilings, window frames and reveals.



SEMPATAP – SEMPAFLOOR – SEMPATAP THERMAL thermal insulation on a roll.

An economical, easy to apply solution to condensation problems and heat loss on cold walls, ceilings and floors.

As simple and quick as wallpaper to apply, dramatically reduces 'U' value and has substantial acoustic/insulation properties. Tested by the B.R.E. and the National Physical Laboratory as an energy saving product. Contact MGC for product brochures and specification details.



MOULD GROWTH CONSULTANTS LTD

Unit A3 Longmead Business Centre Blenheim Road Epsom KT19 9QQ

Tel: 01372 743334 Fax: 01372 720856

Web Site: <http://www.mgcltd.co.uk> E-mail: info@mgcltd.co.uk

