

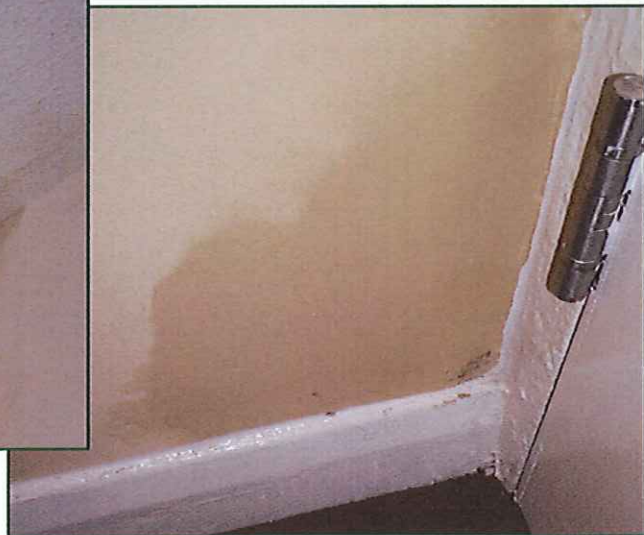
MGC One Coat Damp Seal

Seals and Blocks Damp Stains



- **Fast Drying 2 hours**
- **Solvent Based**
- **1 Coat Application**
- **Interior Use**
- **Seals and Blocks Damp Stains**
- **Redecorate in a Day**
- **Excellent Adhesion**
- **Can be Applied to Damp Surfaces**
- **Easily Over Coated**
- **Allows Trapped Moisture to Escape**

MGC One Coat Damp Seal is a high performance interior paint which permanently covers damp, water stains and most household stains. It dries with a long lasting permanent seal over damp walls and ceilings and can be over coated with emulsion or gloss paint as well as wallpaper. It is specially formulated to allow trapped moisture to escape over time so preventing flaking paint or peeling wallpaper



Seals in damp stains on ceilings and walls including:

- **Crayon**
- **Nicotine**
- **Rust Stains**
- **Efflorescence Salts**
- **Soot**
- **Flood Damage**
- **Water Stains**
- **Tide Marks**

MGC One Coat Damp Seal for interior use covering damp walls and ceilings, water stains and households stains.

PRODUCT DATA SHEET	
PRODUCT	MGC Damp Seal
Type	A quick drying interior high performance solvent based paint on polyester
Intended Use	For covering damp walls and ceilings, water stains and most households stains. For interior use.
Special Features	Quick drying and can be over coated with emulsion or gloss paint as well as wall paper. It does not cure the damp problem but allows trapped moisture to escape. Not suitable for exterior use. Apply in well ventilated conditions
Preparation	Surfaces must be clean, dry and free from dust, loose paint and mould growth or solid matter likely to interfere with the penetration of the sealer. Repair any damage to the surface and make good. Sources of damp should be eliminated before treatment.
Application	Stir well before use and apply 1 or 2 liberal coats as necessary. Do not apply to saturated walls or newly plastered surfaces, these should be allowed to dry for one week before application of the Damp Seal
Coats	Apply 1 coat and if necessary a 2nd coat may be applied and brushed out approximately 30 cm beyond affected area
Drying Time	1-2 hours.
Re-coating Time	2 hours between coats in warm conditions. Allow 2 hours before applying a top coat or wall paper
Application Temp.	Ideally 15 - 25°C, do not use below 10°C or in conditions of high humidity.
Coverage	Approximately 7sq.metres per litre per coat, depending on absorbency of surface being treated
Maintenance	N/A
Compatibility	Can be over coated with most water or oil based paints
Settlement	STIR WELL BEFORE USE
Shelf-life/ Storage	Many years if stored in the original tightly closed container in a cool dry place.
Hazards	Flammable. Repeated exposure may cause skin dryness or cracking. Keep out of reach of children. In case of contact with eyes rinse immediately with plenty of water and seek medical advice. After contact with skin wash immediately with plenty of water. Wear suitable protective clothing and gloves. Use only in well ventilated areas. A full Safety Data Sheet is available upon request or on www.mgcltd.co.uk
Clean-Up	Remove as much product as possible from the brush and clean with Xylene Thinners or Brush Cleaner. Hard brushes can be cleaned with Brush Restorer.
Sizes	2.5 Litres

**Mould Growth Consultants Ltd.
Unit A3 Longmead Business Centre
Blenheim Road
Epsom KT19 9QQ**

Telephone: 01372 743334

Email: info@mgcltd.co.uk

Web Site: www.mgcltd.co.uk